



Nissan Web-To-Host (Instructions for Bluezone V10)

January 25, 2024



OVERVIEW

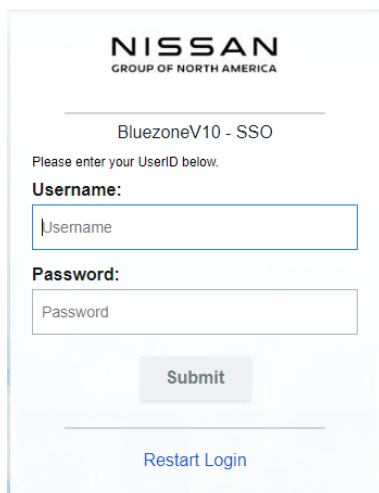
Nissan Corporate users can now access the Nissan host system (Nissan Mainframe) by a new version of Web-To-Host (version 10).

In order to use the new Web-To-Host (aka WTH) version 10 application, you must first download and install the version 10 software for WTH. After the initial installation of this software, you will *not* need to download and install the software again. You will simply visit **Nissan Web-To-Host** page and click the **CONNECT** link, displayed on web page, to access Nissan Information Systems on the Nissan host system (see page 8)

ONE-TIME INSTALLATION

Instructions for the initial installation of Web-To-Host:

To install the Web-To-Host application, you should visit **Nissan Web-To-Host** page by Web3270 URL (Internal : <http://web3270.ndc.nna> , External : <https://web3270.nissan-ix.com>) in your browser. The browser will display **BluezoneV10-SSO** Login page for entering your credentials.



NISSAN
GROUP OF NORTH AMERICA

BluezoneV10 - SSO

Please enter your UserID below.

Username:

Username

Password:

Password

Submit

[Restart Login](#)

If you are accessing Web-To-Host from external network (not in Nissan Network), you will prompted for Multi Factor Authentication. If you have never registered for MFA (Multi Factor Authentication), you will be redirected to **MFA-Registration** Page :

NISSAN
GROUP OF THE AMERICAS

Multifactor Authentication (MFA)
Enrollment

Please enter your UserID below.

Username:

Password:

[Restart Login](#)

Copyright 2015 SecureAuth Corp. All rights reserved.

*Please note that you need to be in **Nissan network** in order to be able to register for Multi Factor Authenticaiton.*

NISSAN
GROUP OF THE AMERICAS

Setup Multi-Factor Authentication

1. Install
To use multi-factor authentication, you will need to download the SecureAuth Authenticate mobile app to your smart phone.

[Download on the App Store](#) [GET IT ON Google Play](#)

2. Scan
Open your multi-factor authentication app and scan the code with the camera on your phone.

3. Confirm
Enter the verification code generated by your multi-factor authentication app.

[Restart Login](#)

Copyright 2015 SecureAuth Corp. All rights reserved.

Once you complete the MFA registration, you can come back to Nissan Web-To-Host website (<https://web3270.nissan-ix.com>) and enter your user ID and Password.

If you are accessing the **Web-To-Host** within **Nissan network**, you will not be prompted for Multi Factor Authentication.

If you are using a Nissan provided laptop / machine and you are connected to VPN or Nissan Network, your windows based **NMCORP** login will be used for authenticating you to access **Nissan Web-To-Host**.

Post successful authentication, you will be able to see list of all the LPARs you can connect to :

Nissan Web-To-Host



Web-To-Host-On-Demand Macro Conversion

If you need assistance converting your Host On-Demand macros, please contact the helpdesk at 800-514-8061.

For help on changing your keyboard mappings, click [here](#).

For help on changing your default screen colors, click [here](#).

Please select a choice for Mainframe and a choice for 3270 Model, then click Connect.

Mainframe:

- ☒ NC11 (Canada)
- ☐ NMA1 (NMAC)
- ☐ NMC1 (Headquarters)
- ☐ NMC2 (Headquarters Development Test)
- ☐ NMM1 (Manufacturing)
- ☐ NMM2 (Manufacturing Dev Test)
- ☐ NNA0 (CMC)
- ☐ NNA1 (NTCNA)
- ☐ NNA2 (Service Provider)
- ☐ NMX1 (Mexico Prod)
- ☐ NMX2 (Mexico Test)

3270 Model:

- ☒ Mod 2 (24x80)
- ☐ Mod 5 (27x132)

CONNECT

Help Links:

[BlueZone Display & Printer Help](#)

[First Time Setup Instructions](#)

[Access to DR site](#)

NISSAN

If this is your *first* time accessing **new Web-To-Host V10**, you will need to download and install the latest version of the Rocket Web-to-Host application. Click the phrase '**user installer**' to begin the download process. This is available on the same page that shows you the LPAR sessions. You need to scroll down to see :

Configure Bluezone Web to Host Terminal Emulator

First time user :

Please click and download the Open Web Launch utility from the link : [user installer](#)

Open the installer file and click next on each panel to accept default values and continue to install the utility.

Go to downloads section of browser and right click and select "Always open files of this type." and select the "Open Web Launch" from list of programs.

After installation :

Once you have completed the installation, click [Launch Web-to-Host \(Bluezone\)](#) to launch it again.

Cache Clear / Uninstall Rocket TE

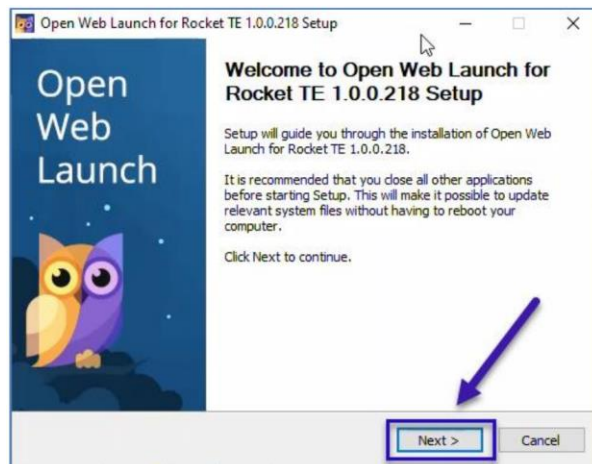
Download and run from this link : [gZClear](#).

If you cannot download or launch the b2w2h.bzip file, contact your service provider.

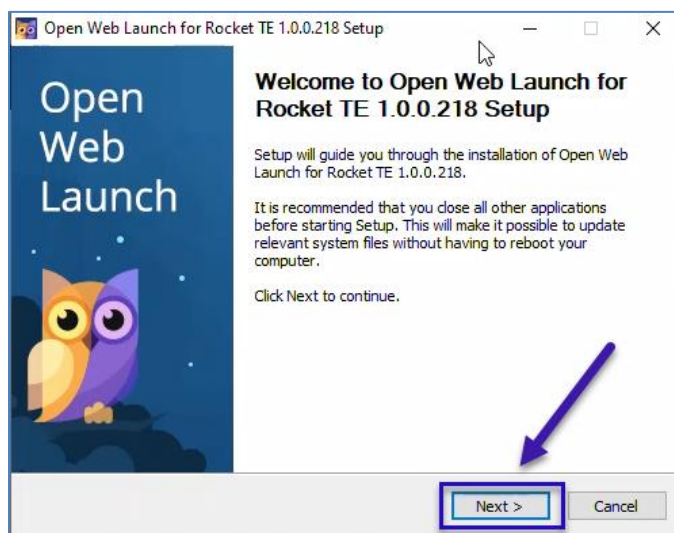
You should see a pop-up with the **open-web-launch-setup-user.exe** file listed. Click the Save / Run button to install the application.

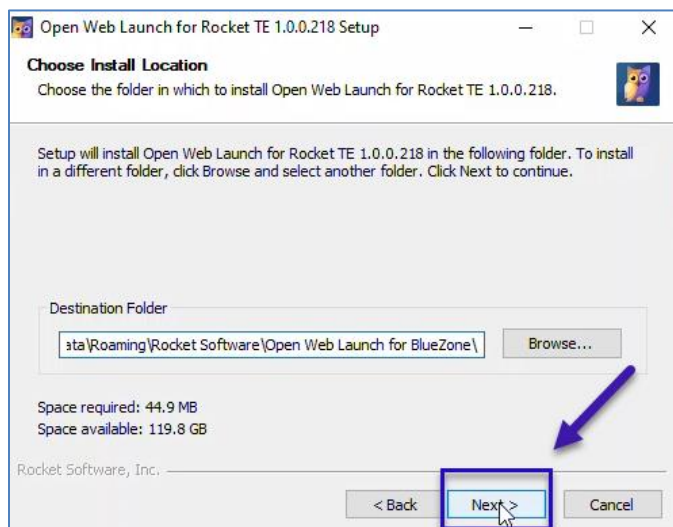
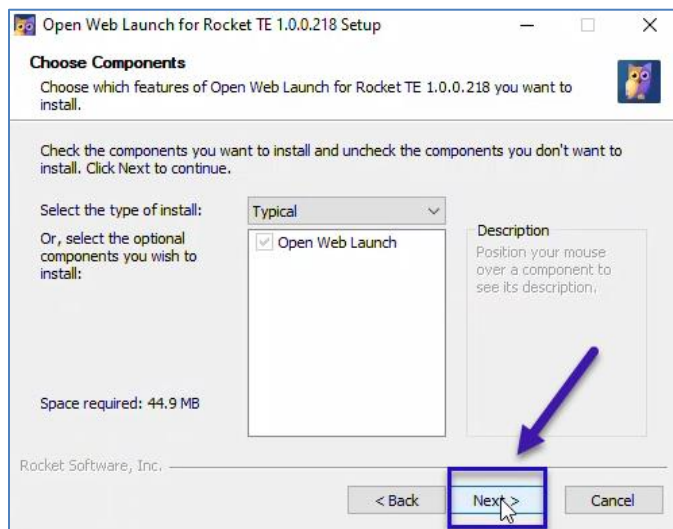
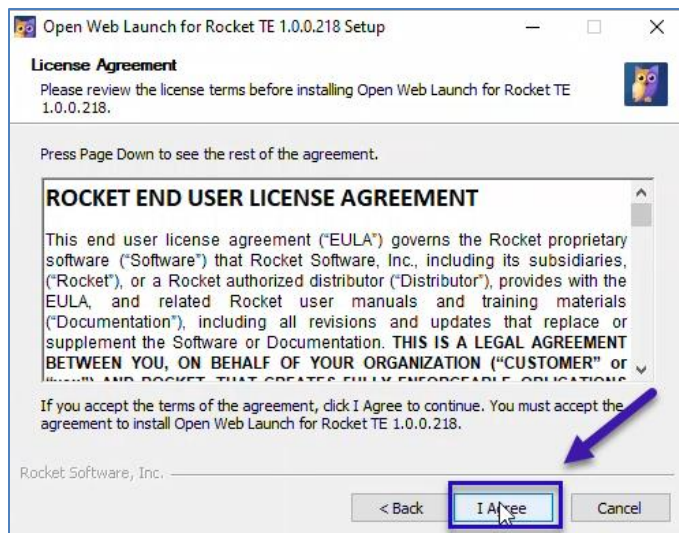


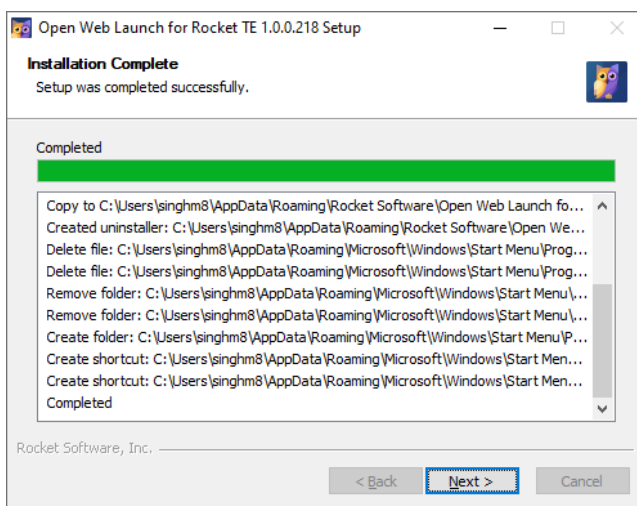
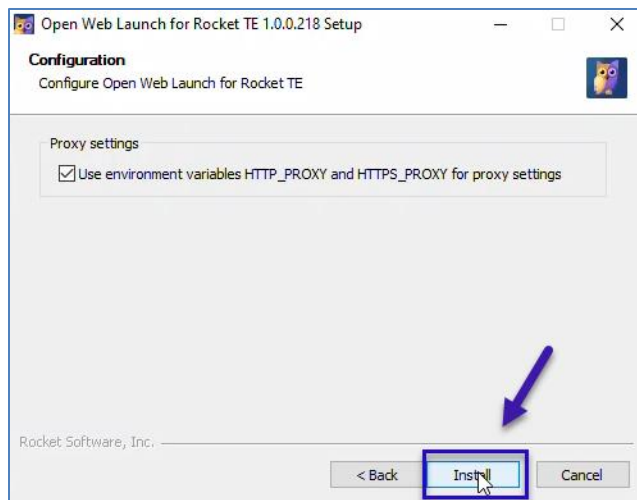
After the file has been downloaded, run the installer file and you should see a pop-up window with Title "**Welcome to Open Wen Launch for Rocket TE 1.0.0.218 Setup**"



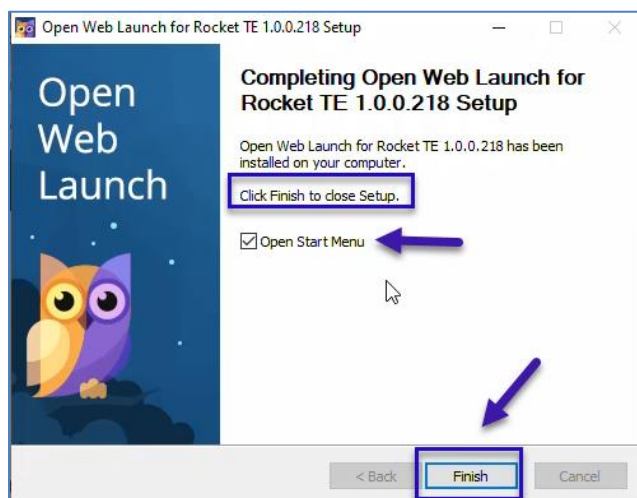
Follow the prompts; as shown in the next few images, click **Next**, **I agree** or **Install** to continue to the next pop-up.







When the installation is finished, you should see the screen shown below. The 'Open Start Menu' option should be selected. After you click the Finish button, the application should launch. The next time you need to use the WTH link, you will *not* need to install the application. See the instructions below for how to launch WTH when it has *already* been installed on your computer.



USING THE WEB-TO-HOST LINK (AFTER INSTALLATION)

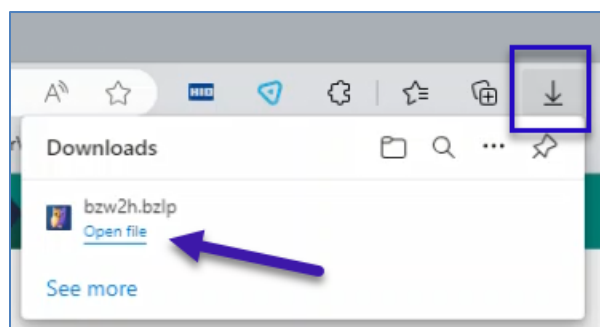
Instructions for using Web-To-Host (Bluezone) *after* the installation.

If you *just* installed the Web-To-Host application on your computer, you should be able to continue as explained in this section.

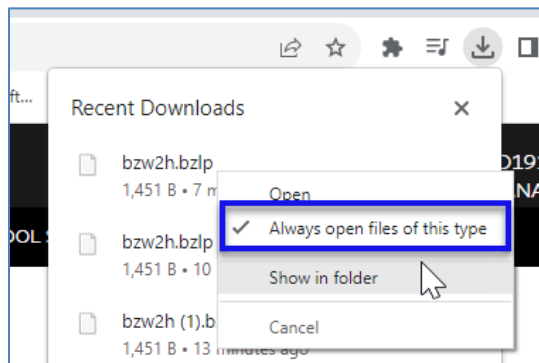
Go to Nissan Web-To-Host LPAR section and select the required LPAR you want to connect and hit **CONNECT** link :

The screenshot shows the 'Nissan Web-To-Host' application window. At the top, there's a header with the title 'Nissan Web-To-Host'. Below the header is a banner image of a dark sedan. Under the banner, there's a section titled 'Mainframe Selection'. Below this, there's a red warning triangle icon followed by text: 'Web-To-Host-On-Demand Macro Conversion. If you need assistance converting your Host On-Demand macros, please contact the helpdesk at 800-514-8061. For help on changing your keyboard mappings, click [here](#). For help on changing your default screen colors, click [here](#).' Below this, there's a instruction: 'Please select a choice for Mainframe and a choice for 3270 Model, then click Connect.' There are two columns of radio button options. The 'Mainframe:' column includes: NCI1 (Canada), NMA1 (NMAC), NMC1 (Headquarters) (selected), NMC2 (Headquarters Development Test), NMM1 (Manufacturing), NMM2 (Manufacturing Dev Test), NNA0 (CMC), NNA1 (NTCNA), NNA2 (Service Provider), NMX1 (Mexico Prod), and NMX2 (Mexico Test). The '3270 Model:' column includes: Mod 2 (24x80) (selected) and Mod 5 (27x132). To the right of these columns is a red 'CONNECT' button. At the bottom left, there are 'Help Links' with three links: 'BlueZone Display & Printer Help', 'First Time Setup Instructions', and 'Access to DR site'. At the bottom right, there is a 'NISSAN' logo.

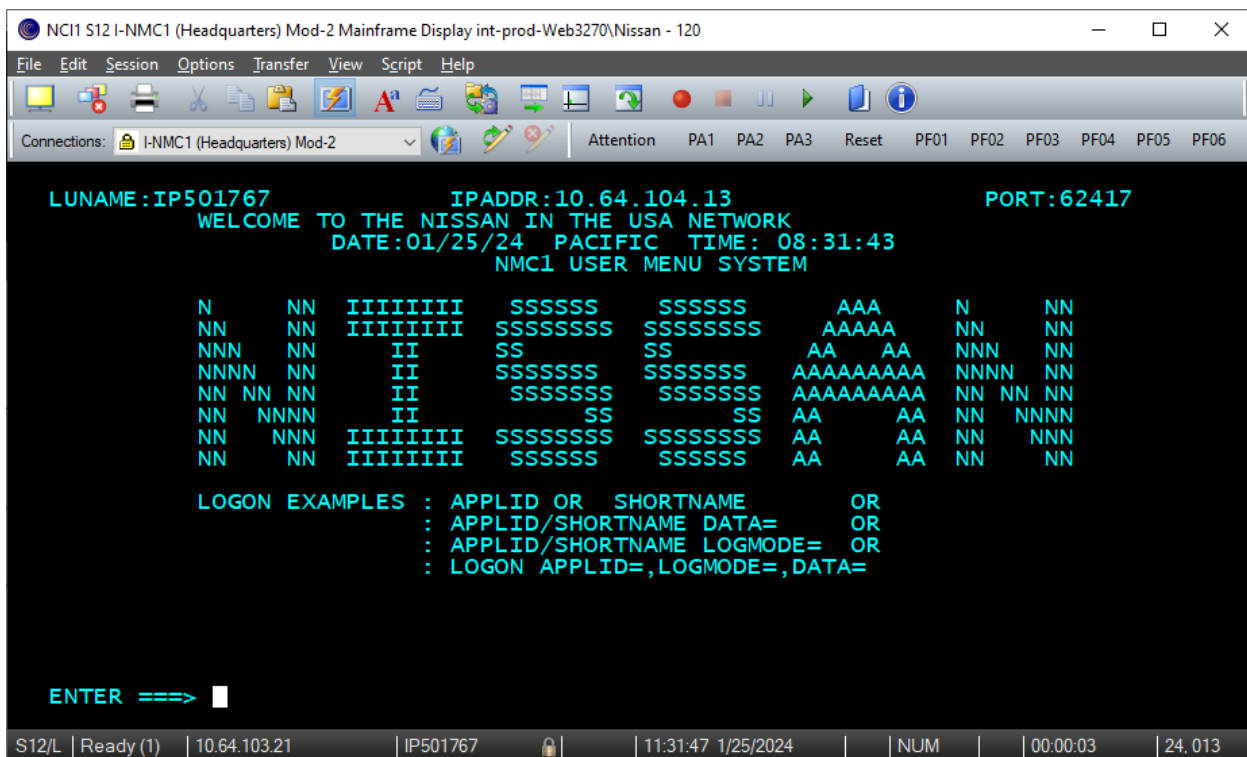
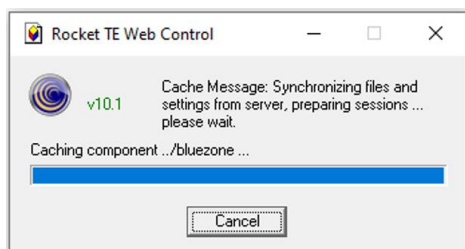
This will download a launch file on your system : **bzw2h.bzlp**



You can click and open this file to launch the session or you can also right click on the file name, in the drop-down list, and select **“Always open files of this type”**. This may save you time in the future as you will not be asked to open the launch file again, rather it will directly launch the session.

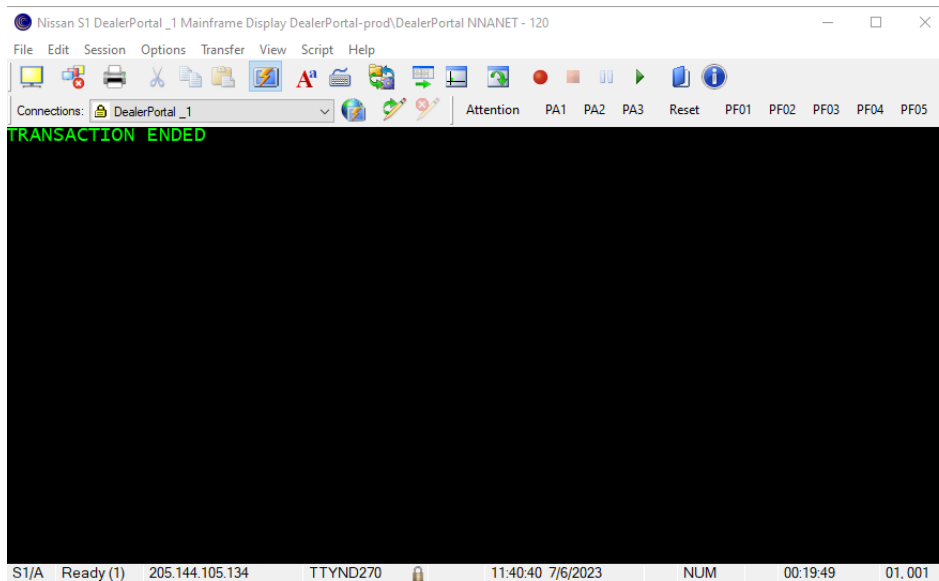


If you wait a few seconds, you should see the mainframe screen appear *on top of* the Configure Bluezone screen.

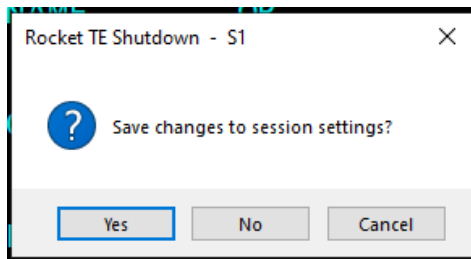


You can now enter your UserID and Password for the LPAR to access the Nissan Mainframes System.

When you are finished using the host system, press **PF9** to exit.



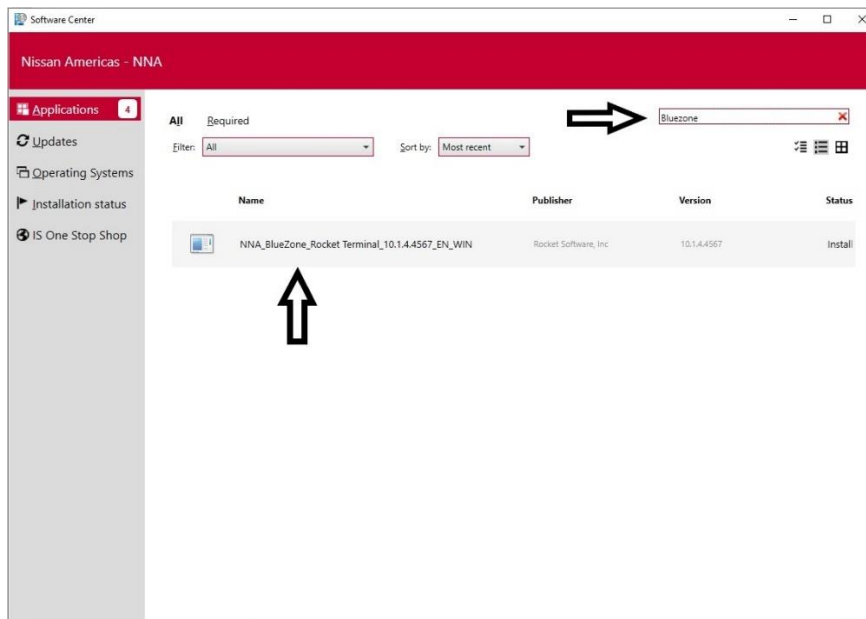
After you exit the host system, click the **'X'** to close the window. You may see a pop-up asking if you wish to save your sessions settings. Select either **Yes** or **No** and the pop-up will close.



INSTALLING A LOCAL COPY OF WEB-TO-HOST

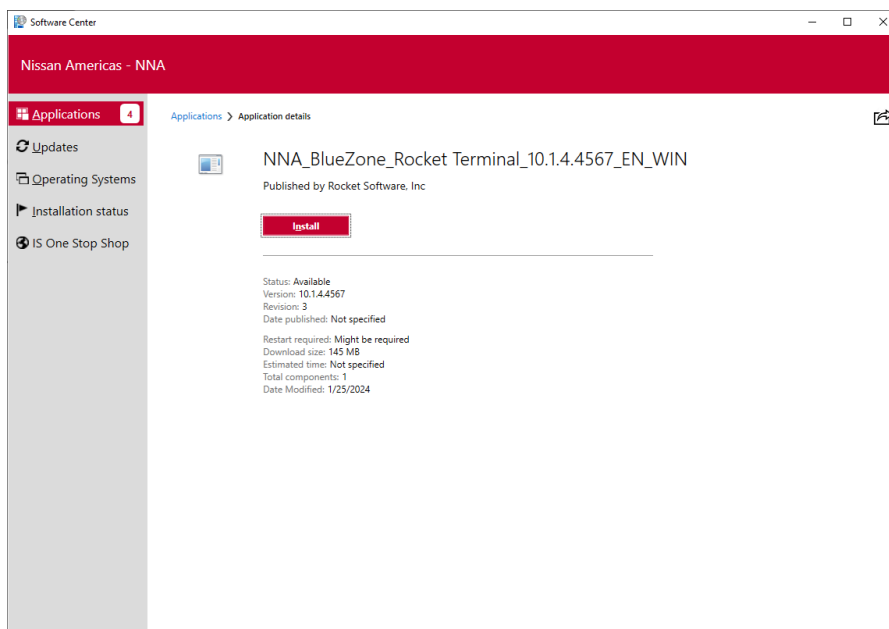
Instructions to Install Web-To-Host software on your Nissan system from Software Center

On your Nissan Provided Laptop / system, click on Windows Start ICON of your computer, look for Software Center and launch it.



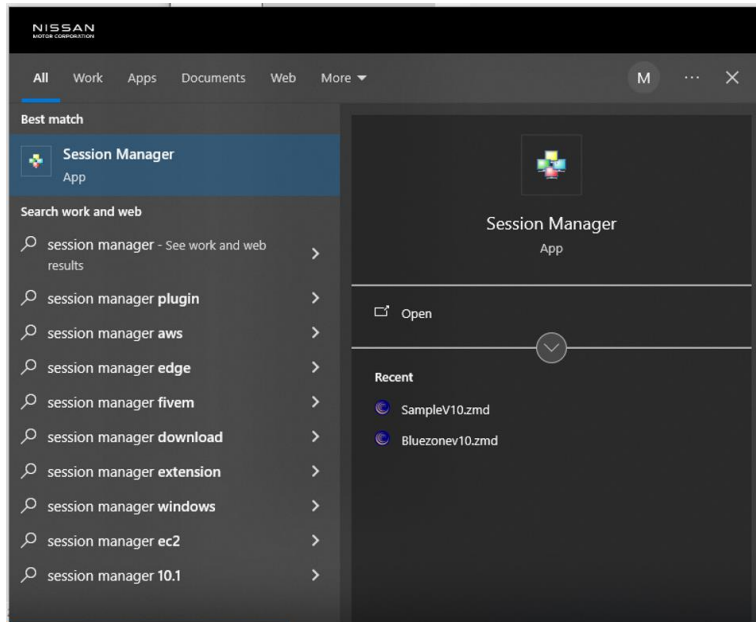
This software is made available in software center for all corporate users.

You can click and open this software for installation and click on Install button:

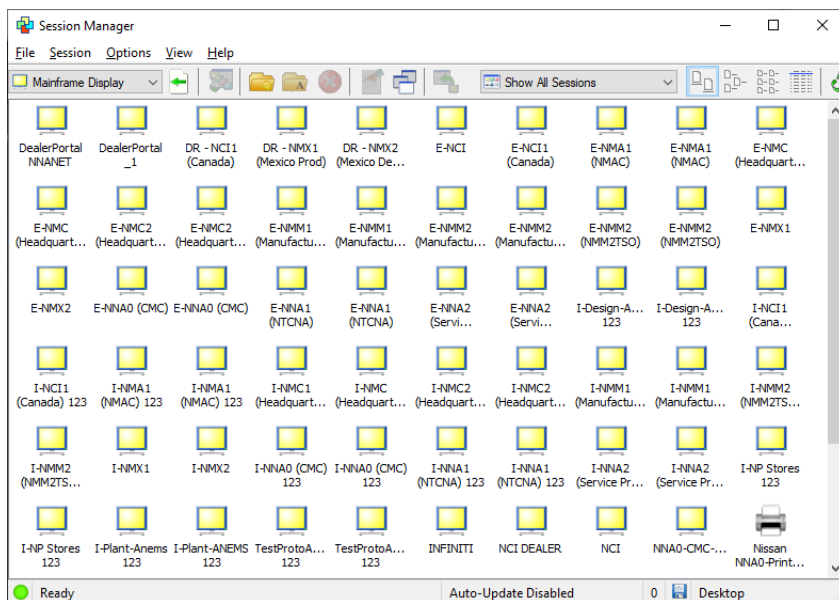


You can now close the software center.

Post installation , click on windows start icon and search for “**Session Manager**”



Click and open “**Session Manager**” and you should be able to see LPAR sessions like below in the “**Session Manager**” screen :



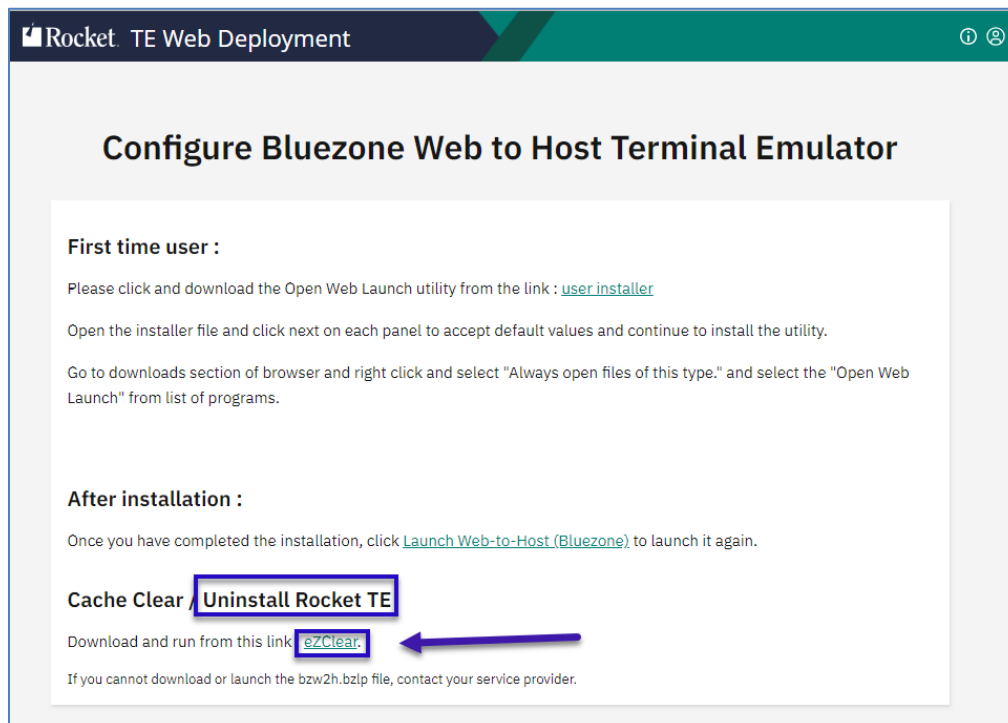
You can now select the desired LPAR and double click to launch it.

CACHE CLEAR INSTRUCTION : TROUBLESHOOTING

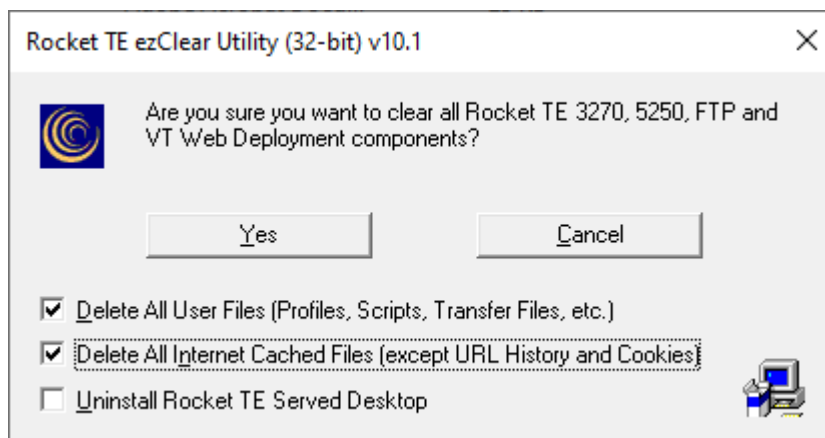
Instructions to clear the Bluezone application cache:

If you face any issues post installation and unable to launch the Bluezone Web to Host or not able to access any of the Mainframe sessions, try to clear the cache by following the steps below :

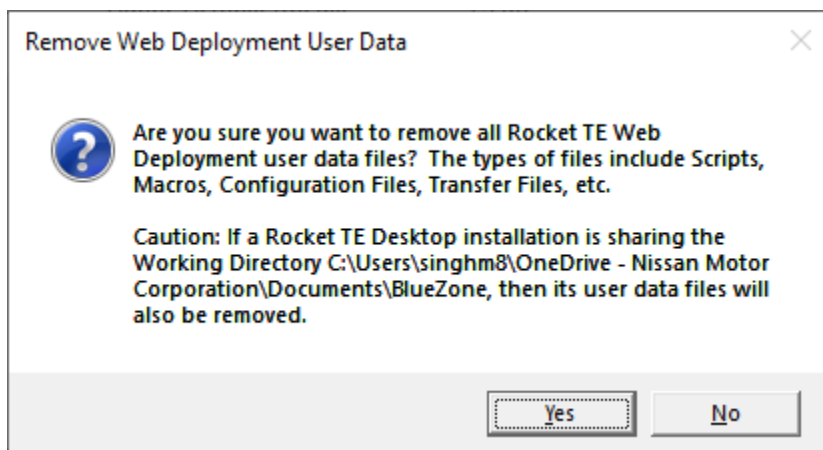
You should click the link called **ezClear** to download and launch a file that will help clean up the application cache from your computer.



Select all these two options at the bottom of the pop-up and click **Yes**.

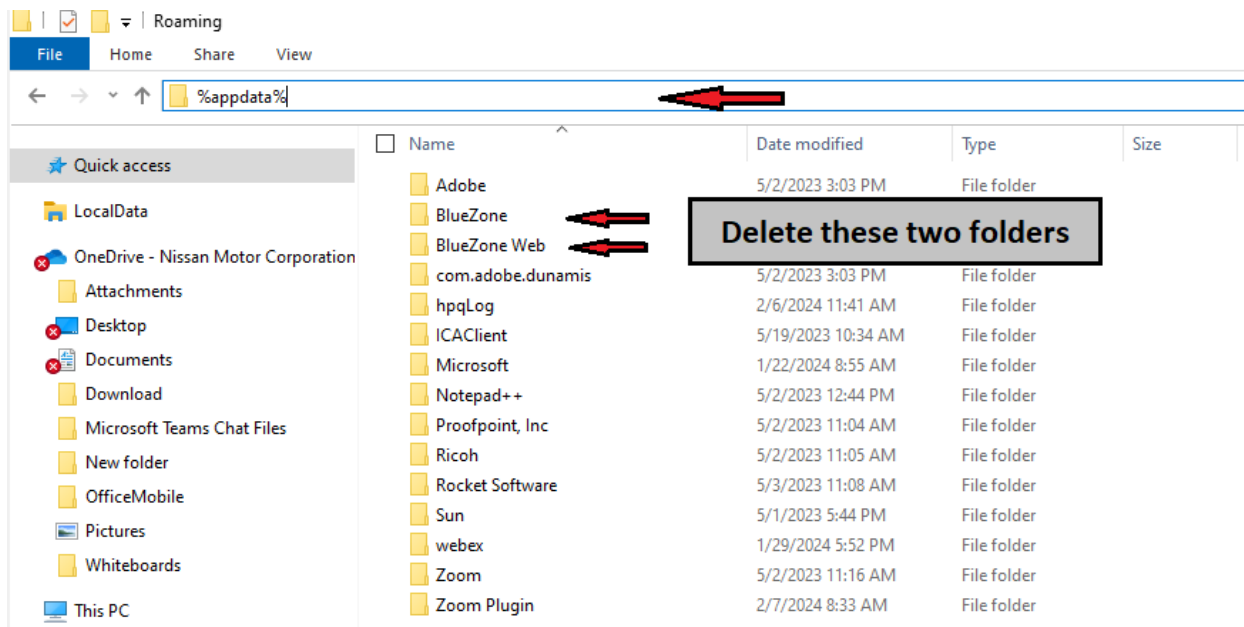


Click **Yes** to remove the files.



If for any reason, even after the cache clear you are not able to launch the sessions, please reboot the computer and delete these two folders from the local AppData folder.

On the file explorer address bar please click and type %appdata% and hit enter button, you will be able to see screen like below :



Now if you try to access your Bluezone Web To Host, it should work correctly.

SUPPORT FOR THE WEB-TO-HOST LINK

Support Instructions

If the user has any questions about this process or if the installation fails and the user cannot access the Nissan Web To Host menu screen, the user should contact the **Nissan Help Desk at 800-662-3282** and open a ticket. The user should ask that the ticket be routed to the **Web-to-Host** group - "TM-APPS-BLUEZONE-SUPPORT-T2" for resolution.
